

SYMBOLS

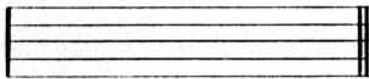
8 NUMBER OF BARS TO REST

REPEAT PREVIOUS MEASURE

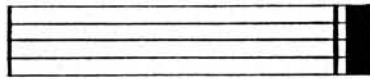
REPEAT PREVIOUS TWO MEASURES

2

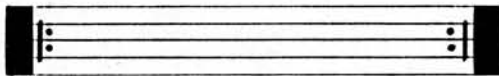
DOUBLE BARS: INDICATES THE END OF A SECTION (OR PHRASE) WITHIN THE MUSIC.



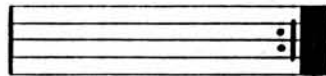
HEAVY DOUBLE BARS: INDICATES THE VERY END OF THE MUSIC.



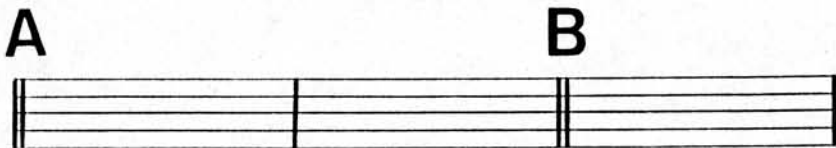
REPEAT SIGNS: MEANS TO REPEAT THE MUSIC BETWEEN THE TWO SIGNS.



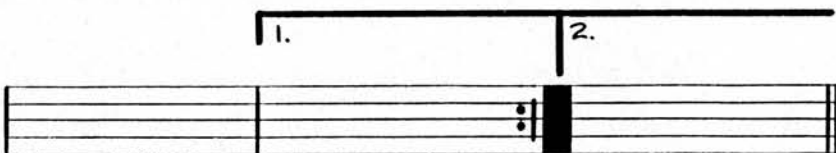
REPEAT SIGN: MEANS TO REPEAT BACK TO THE BEGINNING OF THE MUSIC.



"REHEARSAL" OR "SECTION" LETTERS: A LABEL GIVEN TO A SECTION OF MUSIC SO THAT IT MAY BE EASILY FOUND DURING REHEARSALS.





FIRST & SECOND ENDINGS: THE FIRST ENDING IS PLAYED THE FIRST TIME THROUGH THE MUSIC; WHEN THE MUSIC IS REPEATED THE FIRST ENDING IS SKIPPED AND THE SECOND ENDING IS PLAYED INSTEAD.





NOTE: A 3rd, 4th, 5th ENDING ETC., MAY ALSO BE USED.



Dal Segno (D.S.)

WHEN YOU COME TO THE WORDS DAL SEGNO OR D.S. SIMPLY REPEAT BACK TO THE SIGN  ; THEN CONTINUE ON.

1st X →  → → → **D.S.**

D.S. Al Coda

WHEN YOU COME TO THE WORDS D.S. AL CODA REPEAT BACK TO THE SIGN , PLAY TO THE CODA SIGN  AND THEN SKIP FROM THAT POINT TO THE CODA.

1st X →  → → → 

1st X → → → **D.S. AL CODA**

CRASH CYMBAL IS PLAYED IN 1st MEASURE ONLY; RHYTHM IS THEN REPEATED WITHOUT CYMBAL CRASH.

-OR-

DRUM CHART NOTATION GUIDE

The Notation & Symbols contained in this booklet are those which are used on all our Drum Charts. Although other drum chart transcribers may use slightly different notation, we feel these are the most widely used and accepted.

www.DrumChartsInternational.com

CYMBALS

DRUMS

TIP: You may want to print this notation guide on one piece of paper, using both sides. Then fold in half, making a booklet.